

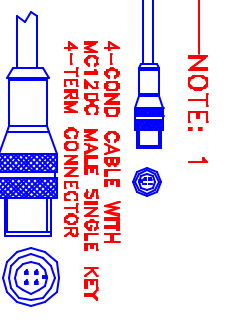
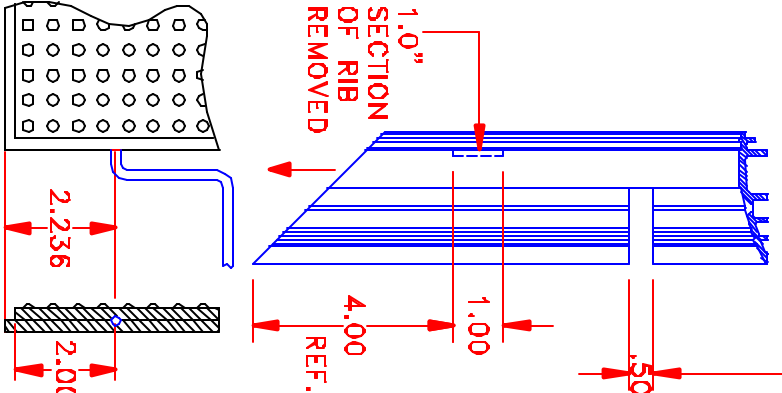
ALUMINUM TRIM RAMP (32644)

SafetyMat

ALUMINUM TRIM RAMP (32644)

SECTION A - A

SEE NOTE: 1  
 USER MAKES CABLE  
 EXIT CUT-OUT (.50")  
 WHERE NEEDED.

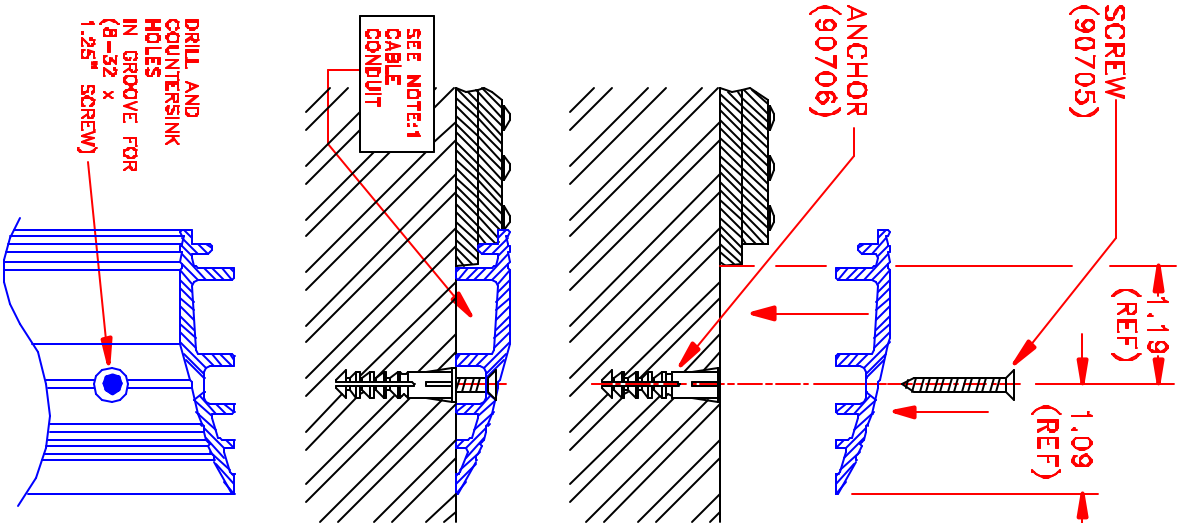


NOTE: 1

STI TO CUT ALUM TRIM "RIB"  
 1.00" SECTION HERE  
 (CABLE TO BE ROUTED THRU  
 CONDUIT, USER DETERMINES  
 LOCATION FOR CABLE EXIT. SEE NOTE: 1)



(SEE NOTE: 2)



**NOTES:**

1. CABLE EXITS ~2.24" FROM EDGE OF MAT CORNER ON THE SIDE INDICATED BY THE FIRST DIMENSION IN THE MODEL NUMBER. FOR EXAMPLE: IF THE MAT IS MODEL UM1854 (18"x54"), THEN THE CABLE EXITS ON THE 18" SIDE AS SHOWN. USER MAKES "CABLE EXIT" CUT OUT AND EMPLOYS ALUM BASE CONDUIT TO ROUTE CABLE. STI CUTS ALUM BASE "RIB" ONLY.
2. MAT INSTALLATION: USER DETERMINES SPACING AND DRILLS & COUNTERSINKS MAT MOUNTING HOLES FOR SIDE TRIM. HARDWARE PROVIDED.

**STI** SCIENTIFIC TECHNOLOGIES INCORPORATED  
 6500 Borden Circle, Fremont, CA 94538-3411

SAFETYMAT SINGLE-PART ALUM TRIM  
 ASSY AND CUT LENGTH SPECIFICATIONS

ACAD FILE: CAT-19601C.DWG

REF: MANUAL\_BB315-0010