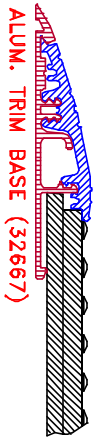


PVC TRIM COVER (32668)



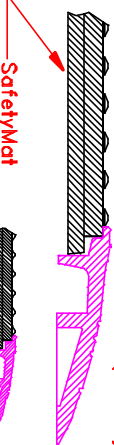
ALUM. TRIM BASE (32667)

SECTION A - A

CORNER (25836)



STI MARKING TO BE ON MAT

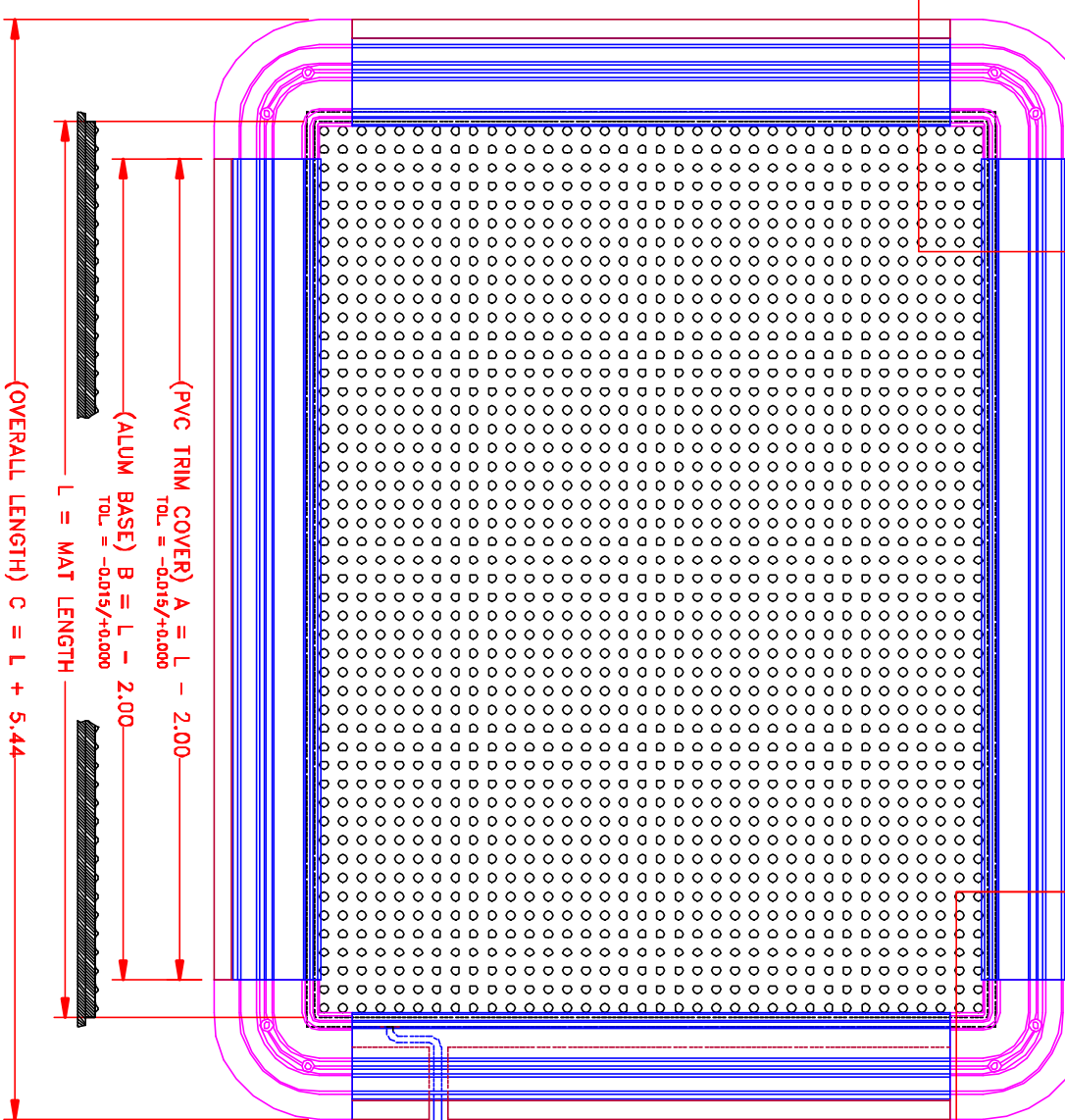


SafetyMat

SECTION B - B

SEE NOTE: 1
USER MAKES CABLE EXIT CUT-OUT (.50") WHERE NEEDED.

B
SIDE ALUM BASE UNDER MAT



(PVC TRIM COVER) A = L - 2.00
TOL. = -.0015/+0.000

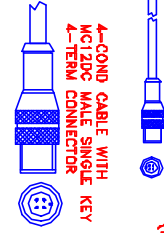
(ALUM BASE) B = L - 2.00
TOL. = -.0015/+0.000

L = MAT LENGTH

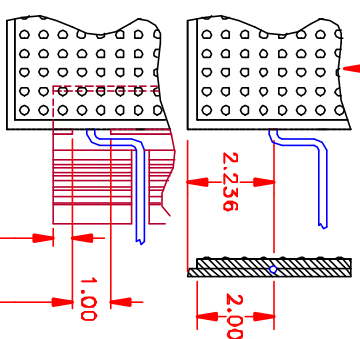
(OVERALL LENGTH) C = L + 5.44

NOTES:

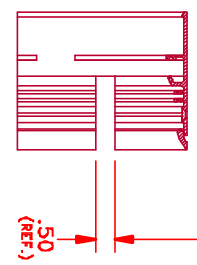
1. CABLE EXITS ~2.24" FROM EDGE OF MAT CORNER ON THE SIDE INDICATED BY THE FIRST DIMENSION IN THE MODEL NUMBER. FOR EXAMPLE: IF THE MAT IS MODEL UM1854 (18"x54"), THEN THE CABLE EXITS ON THE 18" SIDE AS SHOWN. USER MAKES "CABLE EXIT" CUT OUT AND EMPLOYS ALUM BASE CONDUIT TO ROUTE CABLE. STI CUTS ALUM BASE "RIB" ONLY.
2. MAT INSTALLATION: USER DETERMINES SPACING AND DRILLS & COUNTERSINKS MAT MOUNTING HOLES FOR SIDE TRIM.
3. CORNERS HAVE PRE-MADE HOLES.



4-COND CABLE WITH MC12DC MALE SINGLE KEY 4-TERM CONNECTOR

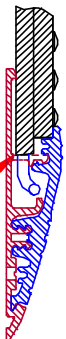


SEE NOTE: 1



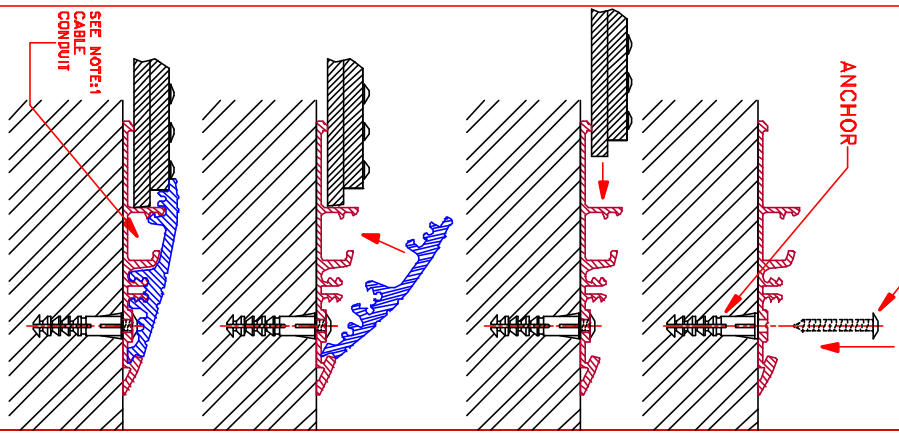
SEE NOTE: 1

STI TO CUT ALUM TRIM "RIB" 1.00" SECTION HERE (CABLE TO BE ROUTED THRU CONDUIT. USER DETERMINES LOCATION FOR CABLE EXIT. SEE NOTE: 1)

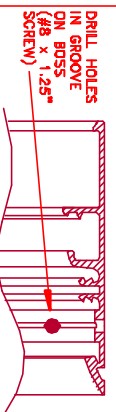


(SEE NOTE: 2)
SCREW

ANCHOR



SEE NOTE: 1
CABLE CONDUIT



DRILL HOLES IN GROOVE IN BOSS (#8 x 1.25" SCREW)

SCIENTIFIC TECHNOLOGIES INCORPORATED
1601 Bannockburn Street, Downers Grove, IL 60515-3911

UM SAFETYMAT TRIM KIT

ALUMINUM & PVC w/ PVC CORNERS
USER ASSEMBLY INSTRUCTIONS

ACAD FILE: CAT-19201F.DWG

REF: MANUAL 99316-0010